

Please Quote: VRPC006208  
(File No: PC021712)

Ms Melissa Purdy  
Coroners Registrar  
Coroners Court of Victoria  
cpuresponses@coronerscourt.vic.gov.au

Dear Ms Purdy

## INVESTIGATION INTO THE DEATH OF BRENDAN P LYNCH

I refer to your letter dated 14 July 2014, regarding the Coroner's recommendations arising from the findings into the death of Brendan Paul Lynch.

VicRoads' responses to the Coroner's recommendations are as follows:

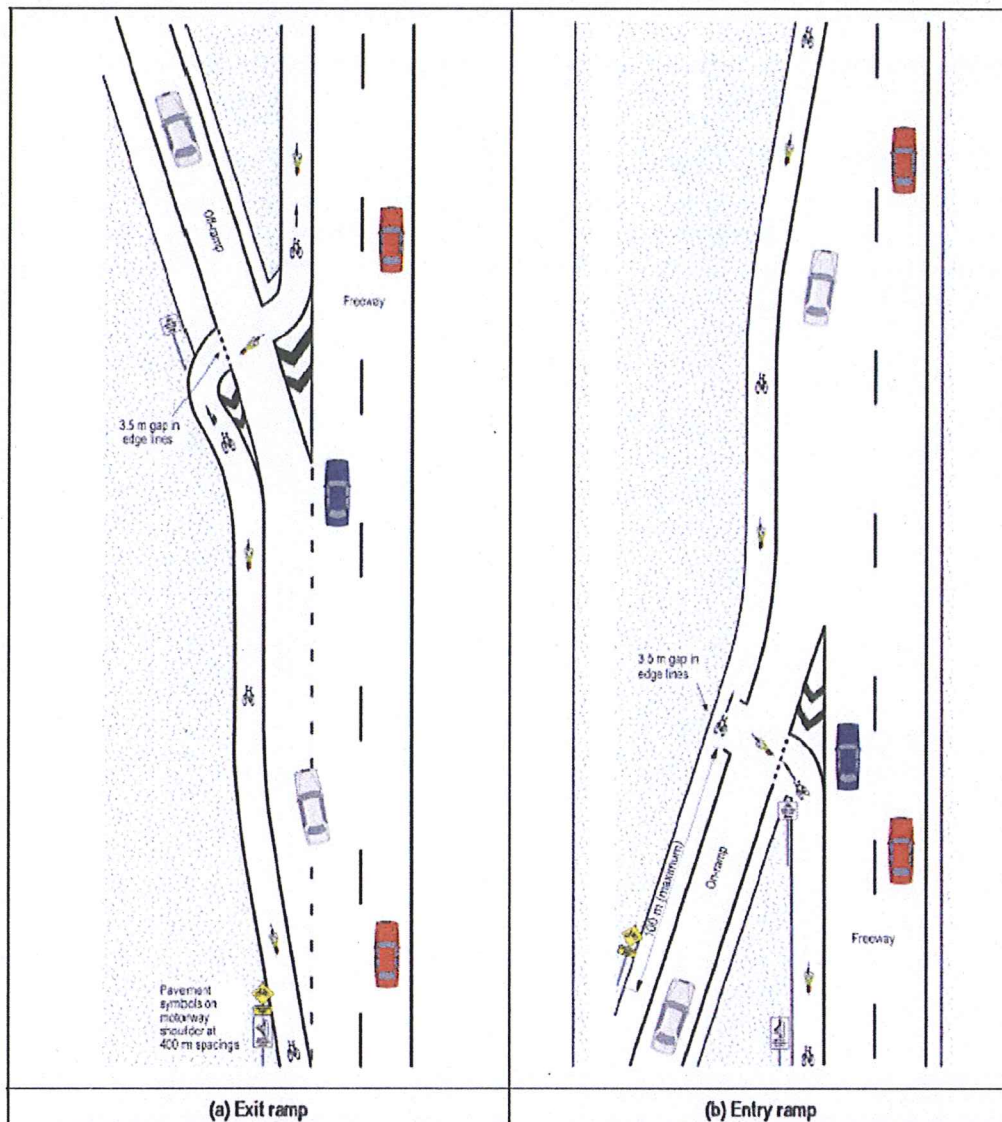
**Recommendation 1: If they have not already done so, that VicRoads erect a "cross here with care" sign on the Hume Freeway nearing the point of the Northern Highway merge, to indicate to cyclists that they should cross at this particular location.**

This recommendation has been implemented. A "cross here with care" sign was installed on 6 May 2014.

**Recommendation 2: That all freeway bicycle "cross here with care" signs should be accompanied by a panel or additional sign to indicate that cyclists must give way to merging traffic. It should also be made clear either by signage, road markings or both, that the cyclist should cross the on-ramp at a right angle at a particular point.**

This recommendation has been partially implemented and will be further implemented subject to approved funding.

A typical treatment for locations where cyclists cross freeway ramps is illustrated in the *Austrroads Guide to Road Design, Part 4C: Interchanges*. A copy of the treatment is shown on the following page.



Source: RTA (2005)

Figure 14.2: Typical at-grade treatment for cyclists at exit and entry ramps

It incorporates signs and road markings which provide information to cyclists to clarify how they should negotiate their way across both on-ramps and off-ramps when travelling along freeways. Dashed line-marking at the cyclist point of crossing with the freeway indicates a 'Give Way' situation to cyclists. The angle of the bicycle lanes with the on and off ramps of freeways aids the cyclist to cross the freeway at right angles with the merging traffic. VicRoads has adopted the Austroads standard.

VicRoads' 2015-2016 Road Program Guidelines include a specific item for improving line-marking for guiding cyclists at freeway ramp entries and exits. Proposals for improvement projects will be considered and prioritised on a State-wide basis.

**Recommendation 3: That VicRoads consider conducting a bicycle safety campaign targeted at rural road users with particular focus on cycling on freeways, the manner of cyclists merging and the proper interaction between cyclists and other road users.**

This recommendation will be partially implemented.

VicRoads is currently developing a three year "Share the Road" communications campaign to encourage more courteous and considerate sharing of the road, with the intention of influencing behaviour and creating safer road use. The campaign strategy and the key messages are currently under development. The proposal includes an overarching communications focus, then four individual campaigns aimed at improving safety and road sharing in relation to cyclists, pedestrians, motorcyclecyclists and trucks. The campaign is expected to begin later this year. The component relating specifically to cyclists is not currently planned to commence until early in 2015.

The cycling component of the campaign is expected to centre on issues related to roads and paths in urban areas, with a metropolitan Melbourne focus, but a State-wide reach. A focus on these areas will mean that the campaign is more likely to be effective in achieving its objectives. Issues relating to cyclists on freeways are not expected to feature to any significant extent. This is due to the fact that cycling crashes on freeways do not make a significant contribution to the crash statistics related to cyclists. However, participants will be referred to a website containing cycling related road rules, and to the VicRoads website which provides a comprehensive range of road rules including the freeway related rules.

Over and above the "Share the Road" communications campaign, the VicRoads website contains information about bicyclist safety and road rules, and provides tips on how to drive and cycle safely and share the road. This can be viewed at: [vicroads.vic.gov.au](http://vicroads.vic.gov.au) on the following menu path: *Traffic & Road Use > Cycling > Places to ride*. This includes advice for cyclists on where they can and cannot ride on freeways, and tips on how to ride safely on rural freeways, including the safest way to cross freeway entry and exit ramps.

Yours sincerely



**JOHN MERRITT  
CHIEF EXECUTIVE**

19 / 10 / 2014